

智慧音视频系统解决方案提供商  
INTELLIGENT AUDIO & VIDEO SOLUTION SERVICE PROVIDER

SSM2110  
移动音箱  
SSM2110 Mobile Active Speaker System



深圳市声菲特科技技术有限公司

S-TRACK SCIENCE & TECHNOLOGY CO., LTD

电话: 0755-29983191 / 400-900-2726 网址: www.s-track.cn

邮箱: service@s-track.cn

Tel : 0755-29983191 / 400-900-2726 Website: www.s-track.cn

E-mail: service@s-track.cn

地址: 深圳市宝安区塘头大道196号A座13楼-14楼

Add: 14F, Block A, NO.196 Tangtou Road, Baoan District, Shenzhen, Guangdong, China



SING YOUR HEART OUT  
S-TRACK SUPPORTS

想唱就唱  
“菲”同凡响

SSM2110 是声菲特综合娱乐与演出用户使用需求，开发的一款可移动型有源音箱。

SSM2110 is developed as a mobile active speaker system for the comprehensive entertainment and performance users.

**SSM2110 | 移动音箱**

SSM2110 | MOBILE ACTIVE SPEAKER SYSTEM

**SSM 2110 移动音箱**  
SSM 2110 MOBILE ACTIVE SPEAKER SYSTEM

以实用，方便，最大限度的满足音箱消费者的需求为设计理念，产品设计简洁，使用高品质喇叭，音质震撼，还原度高，即使在最大音量下破音依然不明显，是追求完美音质的明智选择。

Taking user's needs with practical, convenience and maximum as the design concept, with simple design and high quality speakers, the sound of the portable active loudspeaker is impressive and high-quality audio reproduction, the breaking voice is not obvious even at the maximum volume that is a wide choice for the people who pursue a perfect sound quality.



非凡性能  
超强兼容

SUPER HIGH COMPATIBLE  
PERFORMANCE

SSM2110 | 移动音箱

SSM2110 | MOBILE ACTIVE SPEAKER SYSTEM



带有4通道多功能音频输入  
支持话筒、线路、乐器  
With 4 channels of multi-functional audio inputs that  
supports microphone, circuit and musical instruments.

具有2通道立体声线路音频输入  
Comprises with 2 channels of stereo audio inputs.

带幻象供电，支持各种话筒接入  
With phantom power supply, support  
multiple microphones input.

支持高阻抗CD机、乐器接入  
Support high impedance for CD players  
and musical instruments input.



## 乐队表演 | 户外娱乐

内置高品质DSP处理器进行声学处理  
声音达到专业演出效果

### BAND SHOW | OUTDOOR ENTERTAINMENT

Built-in high quality DSP processor for acoustic processing.  
Achieving highly professional performance sound quality.

QUALITY EXCELLENCE  
WITH ANALYSIS THE SOUND OF NATURE

# 卓越品质 演绎天籁

每通道内置均衡器

带有效果器，支持多达8种声音效果

8级放大增益调节

Built-in equalizer for every channel .

Built-in effect processor, support up to 12 types of sound effects.

8 level of amplification gain adjustment.

**SSM2110 | 移动音箱**

SSM2110 | MOBILE ACTIVE SPEAKER SYSTEM



## 小型演唱会 | 庆典活动

内置专业效果器，各种场景输出演出者圆润、饱满的歌声  
优化的调音面板，让使用者快速调出所需要的声音效果

### MINI CONCERT | CELEBRATION ACTIVITIES

With built-in professional transmitters, the performer showed a full hearted sound with various scenes.  
With optimized tuning panel, users can quickly bring up the sound effects as they need.



## SSM2110 | 移动音箱

SSM2110 | MOBILE ACTIVE SPEAKER SYSTEM

# 应用多样 随意搭配



适应户外娱乐、派对、  
宣传、庆典等场景

Used in outdoor entertainment, party,  
advertising, celebration and many other scenes.

支持单声道、立体声、  
两套产品级联多种播放模式

Supports Mono, Stereo, Cascade and  
many more modes.



## 应用广泛，灵活搭配

### WIDE APPLICATION AND FLEXIBLE COLLOCATION

可以广泛应用于街头艺术、家庭聚会、校园派对、婚礼、会议室、酒吧、练歌房、音乐视听房等场合。

Widely used in cinema, home, conference room, houses of worship, hotel, bar, KTV and multimedia presentation etc.



## SSM2110 | 移动音箱

SSM2110 | MOBILE ACTIVE SPEAKER SYSTEM



## 绿色设计 · 低碳环保

GREEN , LOW-CARBON AND ECO-FRIENDLY DESIGN

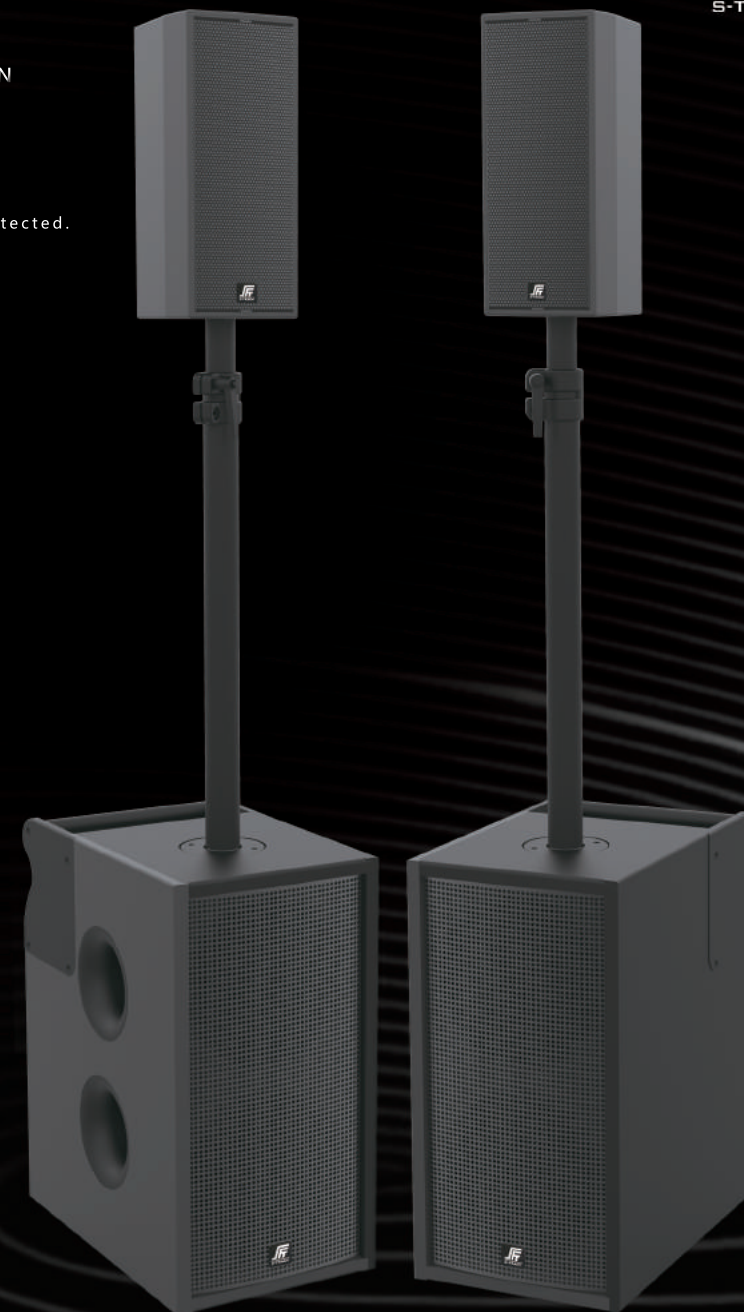
- 支持一键睡眠  
Sleep mode with a single key operation.
- 支持长时间无信号自动睡眠  
Support Auto sleep mode when no signal detected.
- 无使用时自动关闭功放电源  
Wide application and flexible collocation.

## 智能掌控 INTELLIGENT CONTROL

- 支持IPAD无线操控  
Support IPAD with wireless control.
- 支持面板操控  
Support working Panel control.
- 支持应用场景保存与调用  
Support application scene with saving and tuning feature.
- 无需连线就能组成扩声系统  
An amplifier system can be formed without connection.

## SSM2110 | 移动音箱

SSM2110 | MOBILE ACTIVE SPEAKER SYSTEM





## 规格参数

SPECIFICATION

### 基本参数 Basic Specifications

频率响应: 20 Hz - 20 kHz +/- 3 dB

Frequency response: 20 Hz - 20 kHz +/- 3 dB

额定输出功率: 420 W (300 W + 120 W) Class D

Power Rating: 420 W (300 W + 120 W) Class D

### 卫星箱 Satellite Description

最大声压: 121dB (Single Satellite)

Max SPL: 121 dB (Single Satellite)

灵敏度: 95dB@1w/1m

Sensitive : 95dB@1w/1m

单元组成: 4" X2

Driver : 4" X2

尺寸 (WxHxD): 145\*345\*175

Dimensions (WxHxD): 145\*345\*175

### 低音箱 Subwoofer Description

最大声压: 115dB@10%THD

Max SPL: 115dB@10%THD

灵敏度: 90dB@1w/1m

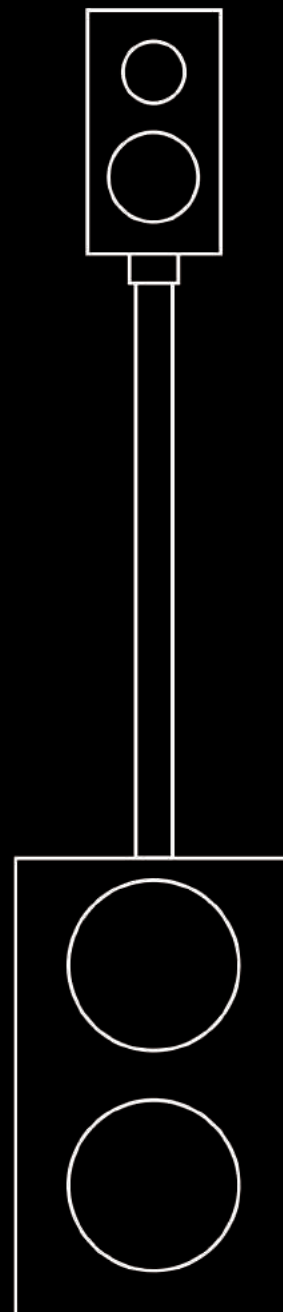
Sensitive : 90dB@1w/1m

单元组成: 8" X2

Driver : 8" X2

尺寸 (WxHxD): 280\*510\*433

Dimensions (WxHxD): 280\*510\*433



# 创新引领未来

INNOVATION LEADS THE FUTURE

SSM2110 | 移动音箱

SSM2110 | MOBILE ACTIVE SPEAKER SYSTEM